

**DS-3E0318P-E/M(C)  
100 Mbps PoE Switch**

DS-3E0318P-E/M(C) switches are layer 2 100 Mbps PoE switches, providing PoE power supply technology and Gigabit network design on the basis of network access to ensure stable data upload. The switches support long range, port isolation, and PoE watchdog functions.

- **Intelligent PoE Management**  
When the power supply exceeds the limit, PoE ports intelligently manage the power supply, which extends the switch lifetime.
- **Up to 300 m Long Range PoE Transmission**  
The distance between IPCs and switch can reach maximum 300 meters.
- **4/8-Core Adaptive Power Supply with Less Power Loss**  
8-core power supply reduces the power loss on cables.
- **6 kV Surge Protection to Improve Reliability in Harsh Environment**  
The built-in surge protection device protects the switch from the sudden lightning surge in harsh environment.
- **Design for Video Transmission**  
VIP port ensures important data transmission when network congestion occurs.

## ▪ Specification

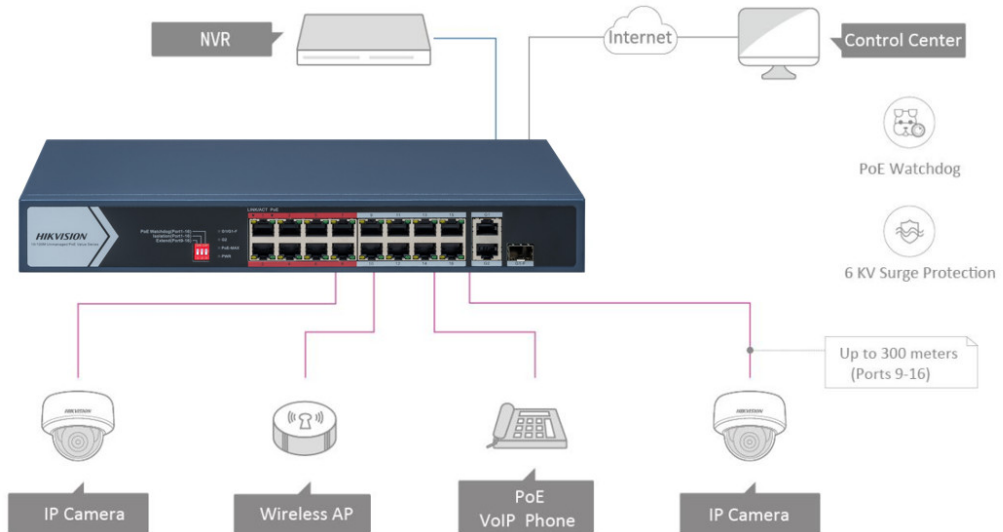
Model	DS-3E0318P-E/M(C)	
<b>General</b>	Shell	Metal material
	Net Weight	1.80 kg (4.00 lb)
	Gross Weight	2.58 kg (5.69 lb)
	Dimensions (W × H × D)	335.0 mm × 44.5 mm × 175.8 mm (13.19" × 1.75" × 6.92")
	Operating Temperature	0 °C to 45 °C (32 °F to 113 °F)
	Storage Temperature	-40 °C to 85 °C (-40 °F to 185 °F)
	Operating Humidity	5% to 95% (no condensation)
	Relative Humidity	5% to 95% (no condensation)
	Power Supply	100~240 V AC, 50/60 Hz, Max. 2.5 A
	Max. Power Consumption	150 W
	Power Consumption in Idle	20 W
	Installation Mode	Desk-Mounted,Wall-Mounted
	Surge Protection	6 kV
<b>Network Parameters</b>	Ports	16 × 10/100 Mbps PoE port,1× Gigabit RJ45 port,1 × Gigabit combo
	MAC Address Table	8 K
	Switching Capacity	7.2 Gbps
	Packet Forwarding Rate	5.36 Mpps
	Internal Cache	4 Mbits
<b>PoE Power Supply</b>	PoE Standard	IEEE 802.3af;IEEE 802.3at
	PoE Power Pin	8-pin power: 1/2(-), 3/6(+), 4/5(+), 7/8(-)
	PoE Port	PoE: Ports 1 to 16
	Max. Port Power	30 W
	PoE Power Budget	130 W
<b>Dialing Function</b>	Long Range	Ports 9 to 16: up to 300 m. Long range performance may vary depend on camera model or cable condition.
<b>Approval</b>	EMC	FCC (47 CFR Part 15, Subpart B),CE-EMC (EN 55032: 2015+A11: 2020, EN IEC 61000-3-2: 2019, EN 61000-3-3: 2013+A1: 2019, EN 50130-4: 2011+A1: 2014, EN 55035: 2017+A11: 2020),IC (ICES-003: Issue 7:2020),RCM (AS/NZS CISPR 32: 2015)
	Safety	UL (UL 60950-1),CB (AMD1:2009, AMD2:2013, IEC 62368-1: 2014 (Second Edition), CE-LVD (EN 62368-1: 2014+A11: 2017)
	Chemistry	CE-RoHS (201165EU); WEEE (201219EU); Reach (Regulation (EC) No.19072006)

## ▪ Available Model

DS-3E0318P-E/M(C)

## Typical Application

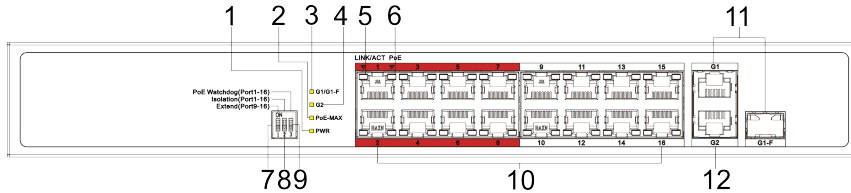
- Data
- Power+Data(PoE)
- Optical Fiber



16-Port 10/100M PoE  
10/100M Unmanaged PoE Pro-Series

## Physical Interface

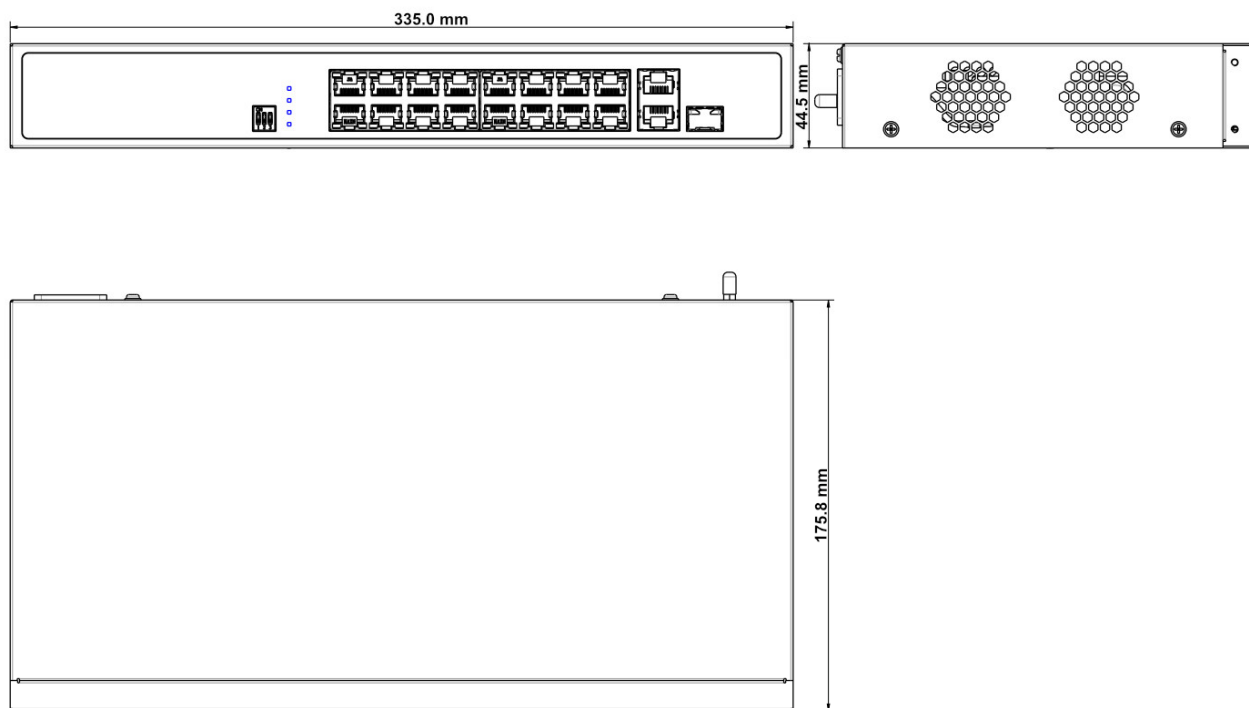
Front Panel



Rear Panel



▪ **Dimension**



**Headquarters**

No.555 Qianmo Road, Binjiang District,  
Hangzhou 310051, China  
T +86-571-8807-5998  
www.hikvision.com



Follow us on social media to get the latest product and solution information.

