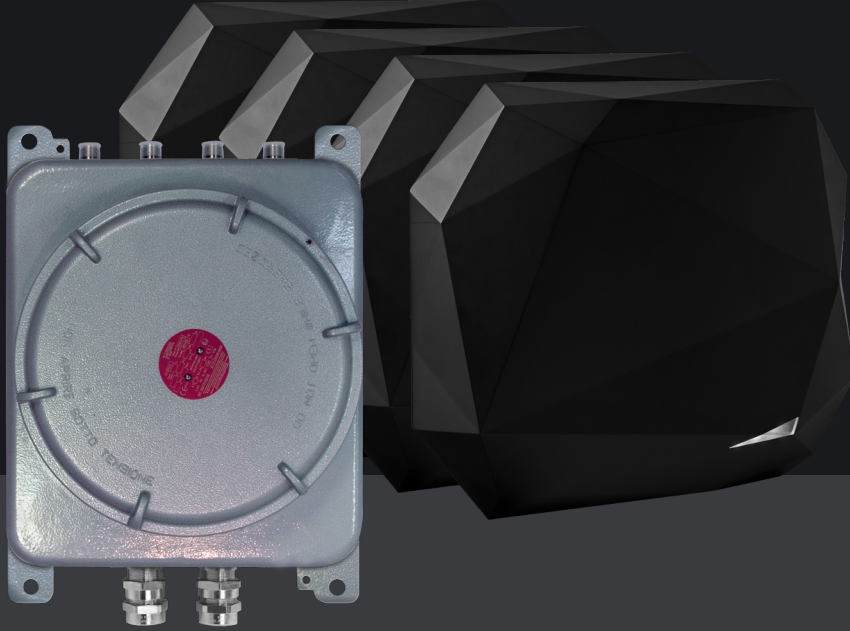




ATX4
ATEX & IECEx RFID SERIES

ATEX & IECEx UHF MULTI-ANTENNA READER

IDENTIFICATION IN EXPLOSIVE ENVIRONMENTS



BENEFITS

- A scalable reader that can be connected to 4 remote antennas
- Long-range identification with an adjustable read range of up to 6m / 19.7 ft*
- Simplified reader configuration by UHF badge or USB cable



Supported by
SIA



Supported by
SPAC
Smart Physical Access Control



UHF
865 - 868 MHz /
902 - 928 MHz



RESISTANCE
EQ IP66



IK10

The UHF ATX4 is a high-performance ATEX & IECEx-certified multi-antenna reader designed to make your vehicle or driver identification applications in explosive environments more fluid.

THE SIMPLE SOLUTION FOR ENHANCED ACCESS

The high-performance identification - up to 10 m / 33 ft* - ensures comfort and reliability for fluid vehicle access, without compromising safety.

The ATX4 reader offers the highest security levels by encrypting and signing your identifiers to protect access credentials against copying and damage using methods recognized by independent organizations specialized in information security (ANSSI).

SCALABILITY & EASE OF INSTALLATION

With its four remote and independent antennas, the ATX4 reader can be adapted to all your long-distance identification requirements, such as the control of

fleets of diverse vehicles (cars, trucks, motorcycles, etc.) or the identification of wide or multiple lanes (up to 4 adjacent lanes).

CONTROLLED ROI & SAVINGS

The modular design enables you to prepare for your future needs and to reduce the cost of the hardware and the installation of a multi-lane application.

The UHF ATX4 reader supports all types of passive UHF credentials (without batteries), guaranteeing:

- controlled investment, costing three to 5 times less than active technologies,
- the elimination of maintenance costs.

OPEN TECHNOLOGY FOR EASY INTEGRATION

The interoperable ATX4 was developed on the basis of the EPC1 Gen2 standard and the international ISO18000-63 standard.

The reader is compatible with all the access control systems on the market. It features multiple interfaces (Wiegand, Clock&Data, TCP-IP, RS485, RS232) and communication protocols (OSDP™ v1 & v2, SSCP®).

ATEX & IECEx-CERTIFIED READER

Fitted with an Ex II 2 GD IP66 explosion-proof enclosure, the reader is ATEX (EN60079) and IECEx-certified and complies with both European Directives 99/92/EC and 94/9/EC.

It enables the control of vehicle access to high-security areas in:

- the chemical and petrochemical industries,
- oil and gas refineries,
- nuclear power plants,
- mines,
- gas-filling areas.



Marking

EC-type examination certificate:
INERIS 13 ATEX 0021X
Approved type: GUB Ex II 2 GD
(G: Gas / D: Dust)
II 2G Ex db IIC T6
II 2D Ex tb IIIC T85°C IP66

DESIGNED & MADE IN FRANCE

WE'VE GOT YOUR BACK



* See the legal notices on the back

SPECIFICATIONS

Operating frequency/standards	UHF - 2 versions: - 865 - 868 MHz: 866 MHz ETSI (Europe), Morocco (Regulation n°ANRT/DC/n°7-10), etc. - 902 - 928 MHz: 915 MHz FCC Part 15 (USA), Australia, New Zealand, etc.																		
Chip compatibility	EPC1 Gen 2 / ISO18000-63																		
Functions	Standard or encrypted/signed EPC read only / Read-write																		
Antenna(s)	Reader only - Optional connection of 1 to 4 remote antennas																		
RF power	Up to +30,5 dBm																		
Reading distances*	Up to 10 m / 33 ft with STid ETA passive label <i>The reading distance may vary depending on the type of vehicle, the installation conditions and the local regulations.</i>																		
Anticollision system	Anticollision system combining reliability and identification speed																		
Communication interfaces	Standard TTL output: ISO2 (Data Clock) or Wiegand protocol - RS232 with SSCP® communication protocol - RS485 with SSCP®, OSDP™ V1 (unencrypted communication) and V2 (SCP secure communication) communication protocols - TCP-IP with SSCP® communication protocol																		
Inputs / Outputs (I/O)	4 inputs (to manage the reader activation, ground loop, presence sensor...) / 4 outputs (to external traffic lights control...)																		
Power requirement	Typical 1.2 A / 12 VDC - Max. 1.5 A / 12 VDC																		
Power supply	9 VDC to 36 VDC (12 VDC typical) or PoE (PoE activated by SSCP® command)																		
Connectors	Plug-in terminal board / 2 PE PAP-R0 M20 cable seals for ext. shielded cables 10-19 mm / 0.4-0.7" Antenna connections: 4 galvanically isolated outputs - Female type N																		
Material	Stainless-steel and aluminum alloy, RAL 9006 gray epoxy																		
Dimensions (h x w x d) / Weight	310 x 270 x 174 mm / 12.2" x 10.6" x 6.8" - 13.5 kg / 458.5 oz																		
Operating temperatures	- 20°C to + 50°C / - 4°F to 122°F																		
Storage temperatures	- 40°C to + 65°C / - 40°F to + 149°F																		
Resistance	Ex II 2 GD IP66 explosion-proof enclosure - Resistant to explosions, adverse weather conditions, water and dust IK10 / IEC 60068-2-6 / MIL-STD-810 vandal-resistant reinforced structure																		
Mounting	4 mounting brackets on the enclosure Compatible with universal VESA 200 x 200 mounting kits (requires a mounting accessory)																		
Certifications	CE, FCC & UL ATEX (EN60079) & IECEx																		
Part numbers x: versions = 4 - 865 - 868 MHz, 5 - 902 - 928 MHz	<table border="0"> <tr> <td>Read only TTL</td> <td>ATX4-Rx1-A/U04-xx/3</td> </tr> <tr> <td>Read only RS232</td> <td>ATX4-Rx2-A/U04-5AB/3</td> </tr> <tr> <td>Read only RS485</td> <td>ATX4-Rx3-A/U04-7AB/3</td> </tr> <tr> <td>Read write SSCP® RS232</td> <td>ATX4-Wx2-A/U04-5AA/3</td> </tr> <tr> <td>Read write SSCP® RS485</td> <td>ATX4-Wx3-A/U04-7AA/3</td> </tr> <tr> <td>Read write OSDP™ RS485</td> <td>ATX4-Wx3-A/U04-7OS/3</td> </tr> <tr> <td>Read write SSCP® TCP-IP PoE</td> <td>ATX4-Wx4-A/U04-8AA/3</td> </tr> <tr> <td>Remote antenna 865 - 868 MHz</td> <td>ANT-SPECTRE-E</td> </tr> <tr> <td>Remote antenna 902 - 928 MHz</td> <td>ANT-SPECTRE-F</td> </tr> </table>	Read only TTL	ATX4-Rx1-A/U04-xx/3	Read only RS232	ATX4-Rx2-A/U04-5AB/3	Read only RS485	ATX4-Rx3-A/U04-7AB/3	Read write SSCP® RS232	ATX4-Wx2-A/U04-5AA/3	Read write SSCP® RS485	ATX4-Wx3-A/U04-7AA/3	Read write OSDP™ RS485	ATX4-Wx3-A/U04-7OS/3	Read write SSCP® TCP-IP PoE	ATX4-Wx4-A/U04-8AA/3	Remote antenna 865 - 868 MHz	ANT-SPECTRE-E	Remote antenna 902 - 928 MHz	ANT-SPECTRE-F
Read only TTL	ATX4-Rx1-A/U04-xx/3																		
Read only RS232	ATX4-Rx2-A/U04-5AB/3																		
Read only RS485	ATX4-Rx3-A/U04-7AB/3																		
Read write SSCP® RS232	ATX4-Wx2-A/U04-5AA/3																		
Read write SSCP® RS485	ATX4-Wx3-A/U04-7AA/3																		
Read write OSDP™ RS485	ATX4-Wx3-A/U04-7OS/3																		
Read write SSCP® TCP-IP PoE	ATX4-Wx4-A/U04-8AA/3																		
Remote antenna 865 - 868 MHz	ANT-SPECTRE-E																		
Remote antenna 902 - 928 MHz	ANT-SPECTRE-F																		

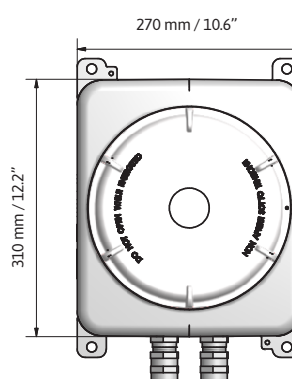
RANGE OF ATEX & IECEx UHF READERS



UHF reader with a built-in antenna - ATX



UHF mobile terminal - TATX



*Please note: Communication distances are measured to the center of the antenna. They depend on the vehicle position, antenna configuration, reader installation environment, supply voltage and local regulations. External interference can reduce the reading distances. The reading performance depends on the position of the tag and the type of windshield. Athermic windshields can affect reading performance. Positioning the tag in an uncoated area is essential.

Legal: STid is a registered trademark of STid SAS. All the brands mentioned in this document belong to their respective owners. All rights reserved – This document is the property of STid. STid reserves the right to make changes to this document and to cease marketing its products and services at any time and without notice. The photos are not contractually binding.

Headquarters / EMEA

13850 Créasque, France
Tel.: +33 (0)4 42 12 60 60

PARIS-IDF Office

92290 Châtenay-Malabry, France
Tel.: +33 (0)1 43 50 11 43

STid UK Ltd.

Gallows Hill, Warwick CV34 6UW, UK
Tel.: +44 (0) 192 621 7884

NORTH AMERICA Office

Irving, Texas 75063-2670, USA
Tel.: +1 469 524 3442

LATINO AMERICA Office

San Rafael 06470 CDMX, México
Tel.: +521 (55) 5256 4706