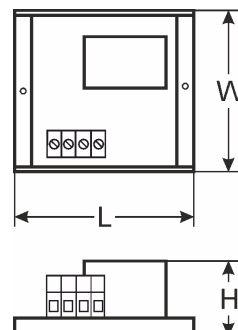
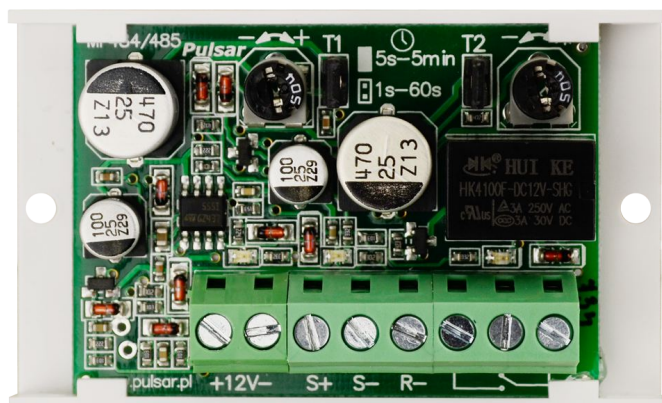


CODE: **AWZ526** v.1.0/II
NAME: **PC4 Time Relay Module**

EN**



DESCRIPTION

The PC4 time module is a transceiver that allows Activation of the relay for the T2 time after the T1 trigger time. The T1 and T2 times can be adjusted in the range from 1 second to 5 minutes.

The relay can be used in door opening circuits, locks, gate closing systems, alarm systems, Intrusion Detection Systems, Access control systems and many others.

TECHNICAL DATA

Supply voltage	10÷14V DC
Power consumption	15 mA- inactive relay /35 mA -active relay, (±5%)
S+ input	10÷14V control
S- input	0V (GND) control
R- input	0V (GND) control
Time range	Time T1: range 1s ÷ 60s and 5s ÷ 5min. Time T2: range 1s ÷ 60s and 5s ÷ 5min
The number of relays	1
Maximum connection voltage	50V AC /30V DC
Maximum connection current	1 A
Maximum contact resistance	<100 mOhm
Optical indication of operation	LED light
Operation parameters	II environmental class, -10°C - 40°C, relative humidity 20%...90% No condensation.
Dimensions	L=70, W=43, H=23 [mm, +/-2]
Mounting	mounting tape or dowel pins x2 (holesØ3mm)
Connectors	Φ0,51÷2,05 (AWG 24-12)
Net/gross weight	0,04 /0,06 [kg]
Declarations, warranty	CE, 2 year from the production date