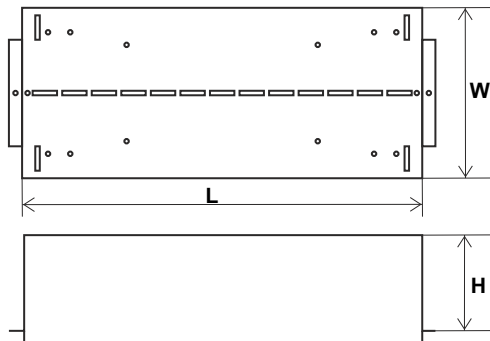
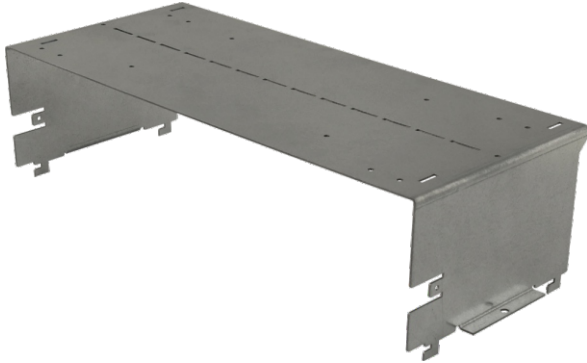


CODE: **BM1** v1.0/l  
 NAME: **Mounting plate BM1**

EN



## DESTINATION

BM1 mounting plate enables installation of additional modules in power supplies, such as: converter, relay, fuse module.  
 Mounting plate is compatible with power supplies:

### Power supplies HPSB series:

- HPSB-12V15A-D, HPSB-12V20A-E
- HPSB-24V5A-C, HPSB-24V7A-C, HPSB-24V10A-D
- HPSB-48V3A-B, HPSB-48V5A-C

## TECHNICAL DATA

<b>Dimensions:</b>	L=270, W=115, H=68 [+/- 2mm]
<b>Operating conditions:</b>	II environmental class, -10°C + 40°C
<b>Net / gross weight:</b>	0,35 / 0,39 [kg]
<b>Material:</b>	electrolytic galvanized steel sheet, 1mm
<b>Warranty:</b>	2 years from production date