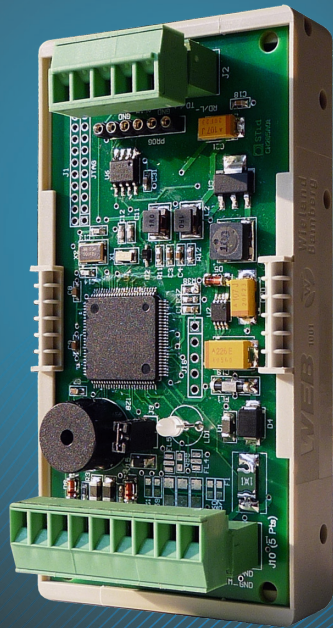


EASYSECURE

PLUG & PLAY SMART INTERFACES TO MAKE YOUR MIGRATIONS EASY



COMPATIBILITY

- Architect® range
- Architect® One range
- WAL range
- ATEX range
- SECard software

SECARD



13.56 MHz



Bluetooth®



Read only



INPUT
RS485



OUTPUT
TTL OR
RS485

CERTIFICATIONS



EasySecure facilitates your technological migrations to secure access control systems by encrypting communication between the card and the secure area. This decoder converts the secure RS485 communication into plain mode Wiegand, Data/Clock or RS485 communication, compatible with the management system without development.

MAKE YOUR MIGRATIONS EASY TOWARDS HIGH SECURITY

Most access control systems provide unsecured communication links between the access control panel and the reader. Wiring is often a weak point where data can be sniffed and manipulated.

The EasySecure interface secures the communication between reader and safe zone through data encryption (AES) and authentication procedure (HMAC-SHA1).

Two versions are available:

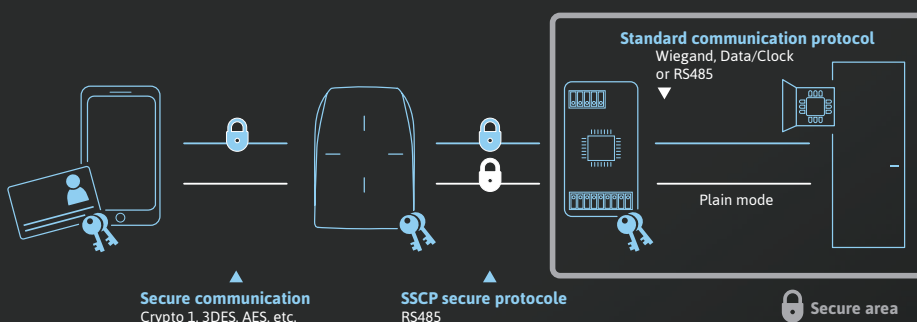
- RS485 encrypted -> TTL (Wiegand or Data/Clock) plain mode.
- RS485 encrypted -> RS485 plain mode.

EASY INTEGRATION AND INSTALLATION

The use of the interface is transparent because it transmits all the data in plain mode to the system. Compatible with the RS485 STid range of secure readers, the decoder inherits the configuration parameters of the reader to which it is connected. Installed in a protected area, it uses RS485 serial communication with the reader to allow flexible and easy wiring.

BENEFITS

- Plug & Play integration: Wiegand, Clock&Data or RS485 serial
- Data protected by SAM software similar to the CSPN certified reader
- Interface configuration to control the reader by the SECard programming software SECard
- Supports standards and specific diversification methods (AGENT, CIMS, STITCH French government cards...)
- Tamper switch input on the interface to remove keys on the interface
- Accelerometer tamper protection system on the reader: it gives the possibility to delete the authentication keys



SPECIFICATIONS

Versions	RS485 encrypted -> TTL (Wiegand or Data/Clock) plain mode	RS485 encrypted -> RS485 plain mode
Reader Output	R33 / RX3: Read only RS485 with SSCP secure protocol Secure communication	
System Output	Wiegand / Clock & Data Plain mode communication	RS485 Plain mode communication
Security features	<ul style="list-style-type: none"> • Data encryption with 128 bits AES and randomization • Authentication procedure (HMAC-SHA1) before any data transmission • Communication and security parameters defined through reader configuration cards 	
Power supply	5 VDC to 24 VDC	
Power requirement	40 mA/12 VDC typical - 60 mA/12 VDC max	
Connections	Removable Screw terminals RS485 input (reader): 5 points TTL output (controller): 9 points	Removable Screw terminals RS485 input (reader): 5 points RS485 output (controller): 5 points
Dimensions (h x w x d)	Electronic board: 93 x 45 x 34 mm / 3.66" x 1.77" x 1.34" - Electronic board with mounting kit: 97 x 49 x 34 mm / 3.82" x 1.93" x 1.34"	
Operating temperatures	- 20°C to + 70°C / - 4°F to 158°F	
Certifications	CE & FCC	
Part numbers	INT-R33-E/PH5-xx	INT-E-7AA/7AB
Compliant readers <small>y: casing color (1: black - 2: white)</small>	<p>Architect® & Architect® One ARC1-R33-A/PH5-7AA/y / ARC1S-R33-A/PH5-7AA/y ARC1-R33-B/PH5-7AA/y / ARC1S-R33-B/PH5-7AA/y</p> <p>ARC-R33-A/PH5-7AA/y / ARCS-R33-A/PH5-7AA/y ARC-R33-B/PH5-7AA/y / ARCS-R33-B/PH5-7AA/y ARC-R33-C/PH5-7AA/y / ARCS-R33-C/PH5-7AA/y ARC-R33-D/PH5-7AA/y / ARCS-R33-D/PH5-7AA/y ARC-R33-E/PH5-7AA/y / ARCS-R33-E/PH5-7AA/y ARC-R33-F/PH5-7AA/y / ARCS-R33-F/PH5-7AA/y</p> <p>Architect® Blue & Architect® One Blue ARC1S-R33-A/BT1-7AA/y / ARC1S-R33-B/BT1-7AA/y ARCS-R33-A/BT1-7AA/y ARCS-R33-B/BT1-7AA/y ARCS-R33-C/BT1-7AA/y</p> <p>Architect® Hybrid ARC-RX3-I/BF5-7AA/y / ARCS-RX3-I/BF5-7AA/y ARC-RX3-J/BF5-7AA/y / ARCS-RX3-J/BF5-7AA/y ARCS-RX3-I/BT2-7AA/y / ARCS-RX3-J/BT2-7AA/y</p> <p>WAL2 - WAL2-R33-E/PH5-7AA/y</p> <p><i>Consult us for compatible ATEX & IECEx readers and OEM modules</i></p>	<p>Architect® & Architect® One ARC1-S33-A/PH5-7AA/y / ARC1S-S33-A/PH5-7AA/y ARC1-S33-B/PH5-7AA/y / ARC1S-S33-B/PH5-7AA/y</p> <p>ARC-S33-A/PH5-7AA/y / ARCS-S33-A/PH5-7AA/y ARC-S33-B/PH5-7AA/y / ARCS-S33-B/PH5-7AA/y ARC-S33-C/PH5-7AA/y / ARCS-S33-C/PH5-7AA/y ARC-S33-D/PH5-7AA/y / ARCS-S33-D/PH5-7AA/y ARC-S33-E/PH5-7AA/y / ARCS-S33-E/PH5-7AA/y ARC-S33-F/PH5-7AA/y / ARCS-S33-F/PH5-7AA/y</p> <p>Architect® Blue & Architect® One Blue ARC1S-S33-A/BT1-7AA/y / ARC1S-S33-B/BT1-7AA/y ARCS-S33-A/BT1-7AA/y ARCS-S33-B/BT1-7AA/y ARCS-S33-C/BT1-7AA/y</p> <p>Architect® Hybrid ARC-SX3-I/BF5-7AA/y / ARCS-SX3-I/BF5-7AA/y ARC-SX3-J/BF5-7AA/y / ARCS-SX3-J/BF5-7AA/y ARCS-SX3-I/BT2-7AA/y / ARCS-SX3-J/BT2-7AA/y</p> <p>WAL2 - WAL2-S33-E/PH5-7AA/y</p> <p><i>Consult us for compatible ATEX & IECEx readers and OEM modules</i></p>



DISCOVER OUR COMPLIANT PRODUCTS



Legal statements: STid and Architect® are trademarks of STid SAS. All other trademarks are property of their respective owners. This document is the exclusive property of STid. STid reserves the right to stop any product or service for any reason and without any liability - Noncontractual photographs

Headquarters / EMEA

13850 Gréasque, France
Tel.: +33 (0)4 42 12 60 60

PARIS-IDF Office

92290 Châtenay-Malabry, France
Tel.: +33 (0)1 43 50 11 43

STid UK Ltd. LONDON

Hayes UB11 1FW, UK
Tel.: +44 (0) 192 621 7884

STid UK Ltd.

Gallows Hill, Warwick CV34 6UW, UK
Tel.: +44 (0) 192 621 7884

NORTH AMERICA Office

Irving, Texas 75063-2670, USA
Tel.: +1 469 524 3442

LATINO AMERICA Office

Cuahtémoc 06600 CDMX, México
Tel.: +521 (55) 5256 4706

AUSTRALIA / APAC Office

Ultimo, Sydney NSW 2007, Australia
Tel.: +61 (0)2 9274 8853

info@stid.com

www.stid-security.com